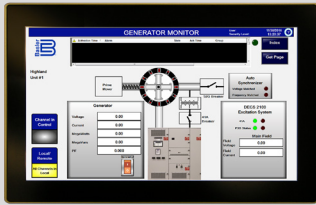
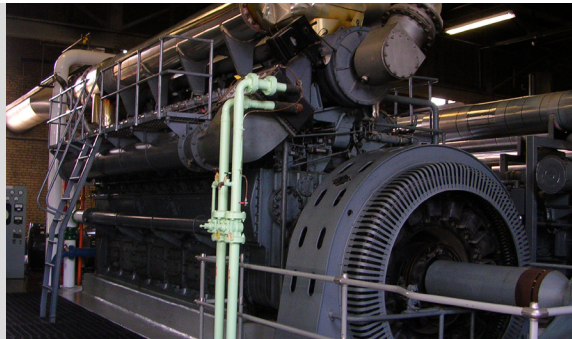


# IDP-1500 Interactive Display Panel



## Overview

The IDP-1500 Interactive Display Panel is a 15.6 inch/39.6 centimeter (measured diagonally) color touchscreen interface that enables a user to monitor and control a DECS-2100 excitation system. IDP-1500 features include excitation system status, system control operations, and routine adjustments of the excitation setpoint. An additional IDP-1500 can be mounted remotely, such as in the control room.

## Features

- Compatible with all DECS-2100 excitation systems (adapter kit for existing units)
- 15.6 in (396 mm) diagonal, TFT LCD, 16.7 million color display
- Generator operation overview screen
- Ethernet interface port for communication with ECM-2
- USB interface port for computer accessories (e.g. keyboard, mouse)
- Horizontal or vertical generator capability curve
- Generator parameters and rectifier bridge temperature trending
- Trending and alarm data retention in nonvolatile memory
- Data is downloadable in .csv format to USB storage device for external viewing in MS Excel®
- Easy feature upgrades via USB flash port
- Multilevel password protection
- Setpoint adjustment provisions
- Digital or analog metering views
  - Generator voltage and current
  - Frequency
  - Power Factor
  - Exciter voltage and current
  - Active, reactive, and apparent power
- Alarm and I/O status screens

## Benefits

- Digital and analog metering views accommodate personal preferences for easy viewing.
- Alarm and Metering screens for quick system status indications.
- Graphically displays generator capability curve, showing real time operating point for up-to-date load status.
- Optional communication for control room installations, allowing for remote system control and monitoring.
- Control screen provides easy setpoint adjustment.
- Multiple levels of password-protected access for local and remote installations.
- Capable of multiple-unit control through remotely mounted IDP-1500.



Figure 1 - IDP-1500: DECS-2100 Installation

## Specifications

### Power Supply

Nominal: 24 Vdc  
 Voltage Range: 18 to 36 Vdc  
 Typical Current Draw: 1.5 Adc at 24 Vdc

### Display

Type: TFT color LCD  
 Size: 15.6 in (396 mm), diagonal  
 Resolution: 1366 (W) by 768 (H) pixels  
 Color: 16.7 million

### Communication

Ethernet: 10/100/1000 Mbps, RJ-45 jack x 2  
 USB: USB 3.0, Type-A port x 2

### Environmental

Operating Temp: 0°C to 50°C (32°F to 122°F)  
 Storage Temp: -20°C to 60°C (-4°F to 140°F)  
 Humidity: 10 to 90%, non-condensing  
 Vibration: EN 60068-2-6  
 Shock: EN 60068-2-27

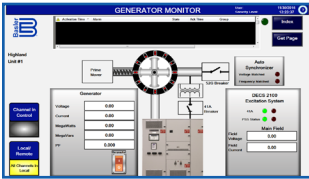
### Agency/Certifications

UL recognized, CE and UKCA compliant, RoHS

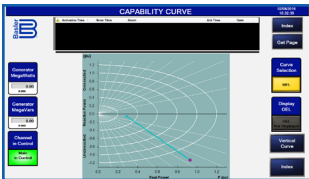
### Physical

Weight: 5.0 kg (11.0 lb)  
 Dimensions (WxHxD): 15.91 x 10.04 x 3.27 inches  
 (404 x 255 x 83 mm)

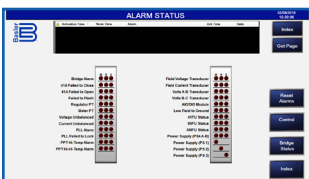
Visit [www.basler.com](http://www.basler.com) for additional information.



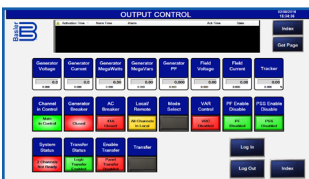
The Generator Monitor screen (left) graphically illustrates excitation system and generator status. Excitation system indicators are provided for ac breaker status, power system stabilizer (PSS) status, field voltage levels, and field current levels. Generator voltage, current, watts, vars, and power factor are also displayed.



The horizontal Capability Curve screen (left) displays the generator minimum excitation limit (MEL) capability curve in per unit values and is superimposed over the actual generator load values. A vertical curve is also available.



The Alarms and Status Screen provides access to a Status column and an Alarm column (left), that displays all active controller limiter or protection alarms and provides access to the History Screen. Activation of any of the alarms cause the indicators to light. The Status column displays the status of key inputs and feature selections.



The Output Control screen (left) provides system control, status indication, and metering of generator and excitation system parameters. Users can initiate a closing of the 41A breaker, switch regulation modes, and adjust generator output through the Raise/Lower setpoint commands.

## Related Products

### DECS-2100 Digital Excitation Control System

An extremely powerful and flexible excitation system that precisely controls, protects, and monitors synchronous generators and motors.

### IDP-801 Interactive Display Panel

A Human Machine Interface (HMI) capable of viewing generator system parameters locally or remotely when utilized with the DECS-250, DECS-250N, DECS-250E, or DECS-450 excitation control systems.

## Accessories

### Ethernet Switch (supplied)

Basler P/N 41133

### Power Supply (optional)

24 Vdc at 3 Adc

Basler P/N 37563

### DIN Mounting Rail for Power Supply and Ethernet Switch (optional)

100 mm (3.94 inch)

Basler P/N 9323900004