

Overview

The IDP-1201 Interactive Display Panel is a 12.1 inch/31 centimeter (measured diagonally) color touch screen interface that enables a user to monitor and control an ECS2100, ECS/RW, DECS-2100, DECS/RW, DECS-250, DECS-250N, DECS-250E, DECS-450, SGC-250, SGC-250N, or SMC-250 excitation system. IDP-1201 monitoring and control features include excitation system status, system control operations, and routine adjustments of the excitation setpoint. An additional IDP-1201 can be mounted remotely, such as, in the control room.

Features

- Compatible with DECS-2100, ECS2100, DECS-250, DECS-250N, DECS-250E, DECS-450, SGC-250, SGC-250N, and SMC-250 excitation systems (adapter kit for existing units)
- 12.1 in (307.3 mm) diagonal, TFT LCD, 65K color display
- Generator operation overview screen
- Ethernet, USB and SD card interface ports
- Horizontal or vertical generator capability curve
- Generator parameters and rectifier bridge temperature trending
- Trending and alarm data retention in nonvolatile memory
- Data is downloadable in .csv format to USB storage device for external viewing in MS Excel®
- Easy feature upgrades via USB flash port
- Multilevel password protection
- Set point adjustment provisions
- Digital or analog metering views
 - Generator voltage and current
 - Frequency
 - Power Factor
 - Exciter voltage and current
 - Active, reactive, and apparent power
- Alarm and I/O status screens

Benefits

- Digital and analog metering views accommodate personal preferences for easy viewing.
- Alarm and Metering screens for quick system status indications.
- Graphically displays generator capability curve, showing real time operating point for up-to-date load status.
- Optional communication for control room installations, allowing for remote system monitoring.
- Control screen provides easy set point adjustment.



Figure 1 - IDP-1201: DECS-2100 Installation

Specifications

Power Supply

Nominal: 24 Vdc
 Voltage Range: 19.2 to 28.8 Vdc
 Typical Current Draw: 1.30 Adc at 24 Vdc

Display

Type: TFT color LCD
 Size: 12.1 in (307.3 mm), diagonal
 Resolution: 800 (W) by 600 (H) pixels
 Color: 65 k

Communication

Ethernet: 10Base-T/100Base-TX,
 RJ-45 jack x 1
 USB: USB 2.0, Type-A port x 1,
 Mini Type B x 1 port
 SD Card Slot: SD/SDHC x 1 (max 32 GB)

Environmental

Operating Temp: 0°C to 55°C (32°F to 131°F)
 Storage Temp: -20°C to 60°C (-4°F to 140°F)
 Humidity: 10 to 90%, non-condensing
 Shock: IEC/EN61131-2 compliant,
 147 m/s², X, Y, Z axes, three times
 Vibration: IEC/EN61131-2 compliant,
 5 to 9 Hz Single amplitude
 3.5 mm (0.14 inch),
 9 to 150 Hz Fixed acceleration:
 9.8 m/s², X, Y, Z axes,
 10 cycles (100 minutes)
 ESD Immunity: Withstands 6 kV,
 IEC/EN 61000-4-2 Level 3
 compliant

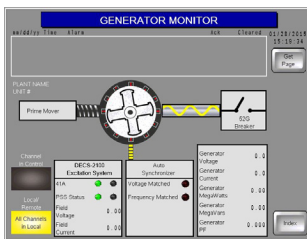
Agency/Certifications

UL recognized, CE and UKCA compliant, RoHS

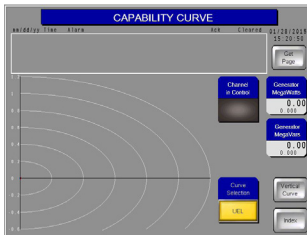
Physical

Weight: 2.5 kg (5.5 lb)
 Dimensions (WxHxD): 12.40 x 8.94 x 2.2 inches
 (315 x 227 x 56 mm)

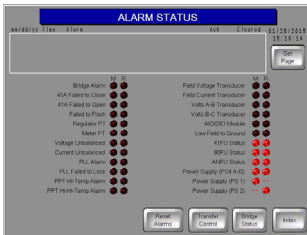
For complete specifications, download the instruction manual at www.basler.com.



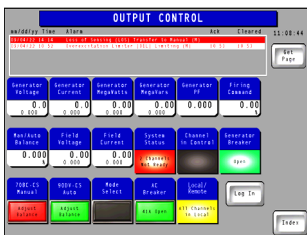
The Generator Monitor screen (left) graphically illustrates excitation system and generator status. Excitation system indicators are provided for ac breaker status, power system stabilizer (PSS) status, field voltage levels, and field current levels. Generator voltage, current, watts, vars, and power factor are also displayed.



The horizontal Capability Curve screen (left) displays the generator minimum excitation limit (MEL) capability curve in per unit values and is superimposed over the actual generator load values. A vertical curve is also available.



The Alarms and Status Screen provides access to a Status column and an Alarm column (left), that displays all active controller limiter or protection alarms and provides access to the History Screen. Activation of any of the alarms cause the indicators to light. The Status column displays the status of key inputs and feature selections.



The Output Control screen (left) provides system control, status indication, and metering of generator and excitation system parameters. Users can initiate a closing of the 41A breaker, switch regulation modes, and adjust generator output through the Raise/Lower set point commands.

Related Products

DECS-2100 Digital Excitation Control System

Controller with additional features such as automatic synchronization and load sharing.

DECS-250E Digital Excitation Control System

Accurate and reliable regulation, control, and protection, in a compact enclosure, for synchronous motors or generators. Three models supply 50, 100, or 200 Adc of continuous excitation current.

DECS-250 Digital Excitation Control System

Total control in a compact package provides precise voltage, var and Power Factor regulation, exceptional system response, and generator protection.

DECS-250N Digital Excitation Control System with Negative Forcing

Provides the same functionality as the DECS-250 with negative field-forcing capabilities.

DECS-450 Digital Excitation Control System

A versatile digital excitation control system for synchronous generators and motors.

Accessories

- Power Supply
 - 24 Vdc, 31 W
 - Basler P/N 9334503101
- DIN Mounting Rail for Ethernet Switch
 - Basler P/N 9323900001